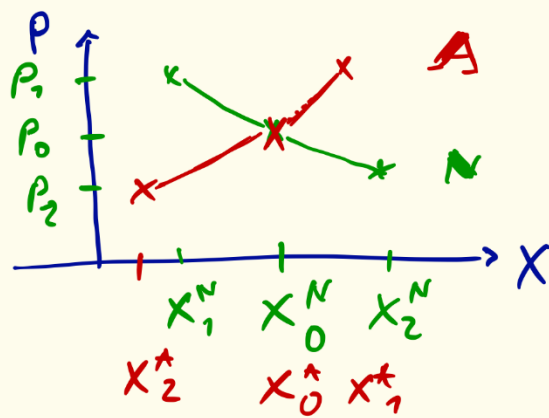
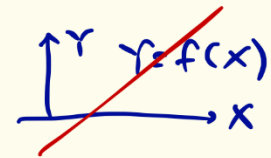


→ Fülle → ZIP ?
 → €

Markt A12 A13a A18
 ↓



Wallas

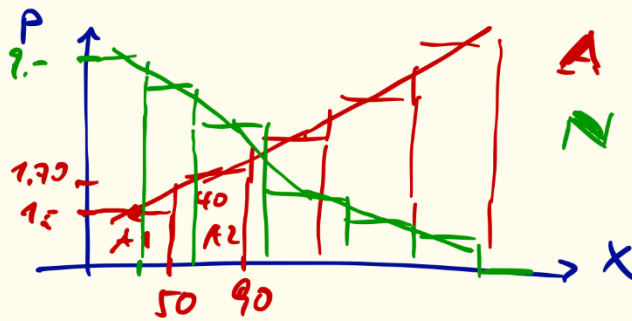


$X_{A;N} = f(P)$
 Kuppelpreis

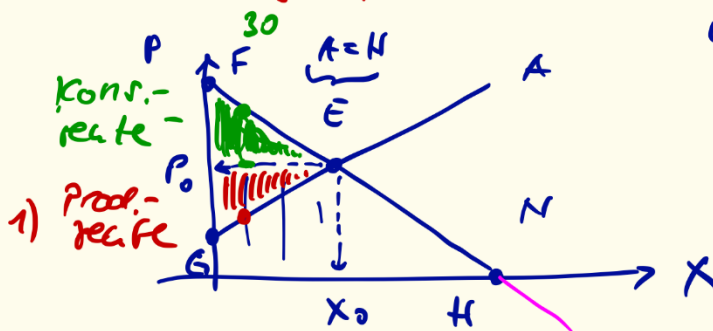


← Reob-Effekt
 ← Prof USA 30u J.
 Fläche

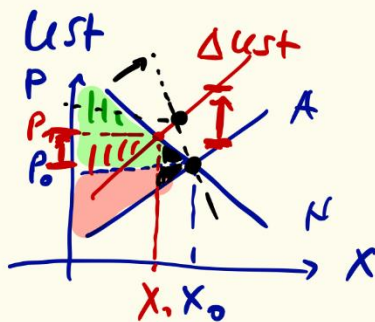
Marktgleichgewicht



1) ind. GR = $(P_0 - PV_A) X_A$!
 ↑ geändert: 1.11.18



E - Gleichgewicht
 $(11) U = P_0 \cdot X_0$
 F - $X_H = 0$
 Prohibitivpreis
 G - Preisuntergrenze
 d. A
 H - Sättigungswerte



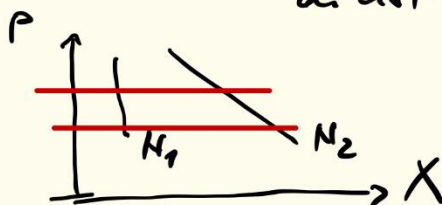
Ust 19%

+ 6% - P
 PT X ↓

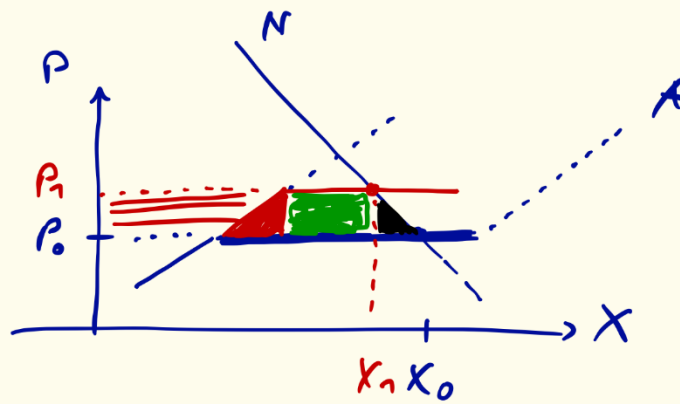
$\Delta P < \Delta Ust$
 Steuerüberwälzung
 in Preise < 70%





Steigen N → größter Überwälzung
 d. Ust

KR ↓ PR ↓
 ⇒ Reiner Verlust
 N1 { unelastisch
 Kaufvertrag
 N2 elastisch



us Markt Allokation



-  KR \rightarrow PR \checkmark
-  KR \rightarrow Kosten \checkmark
-  KR \rightarrow Zölle \checkmark
-  KR - Verlust -