

→ Inflation *

↳ Def.: π

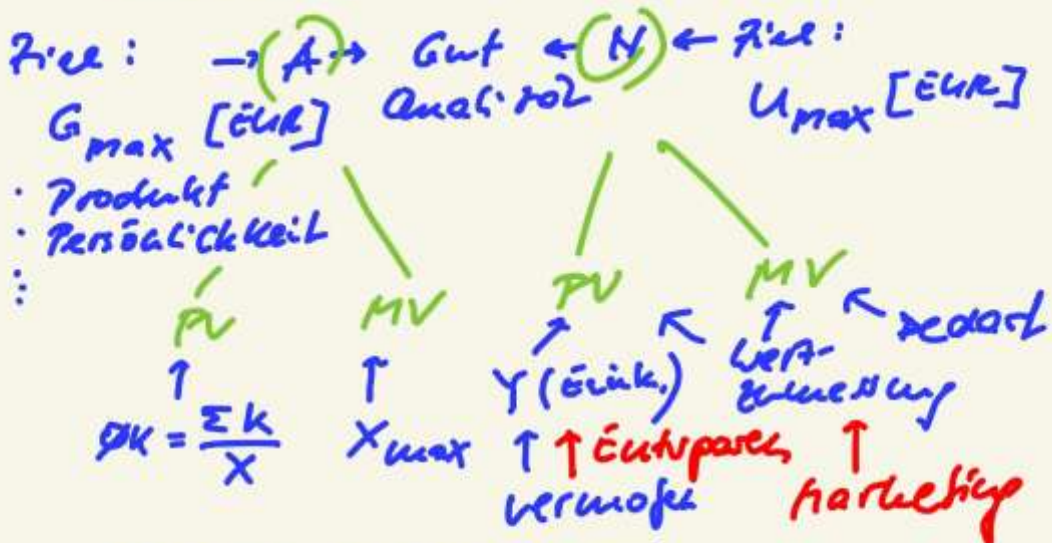
↳ Messung: Ø Warenkorb
 Laspeyres

$$\frac{\sum X_{t-1} \cdot P_t}{\sum X_{t-1} \cdot P_{t-1}} = 1,0270$$

3/26

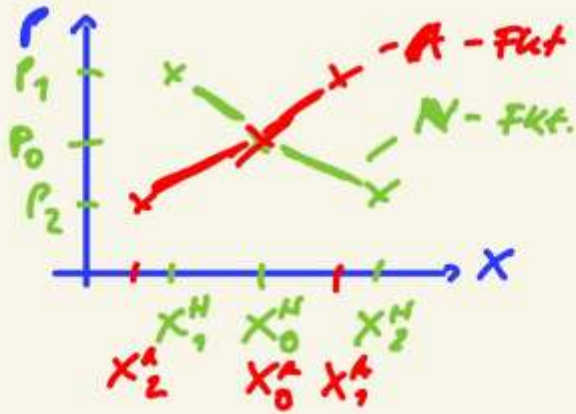
↓
 €€Δ → LZT

Markt



→ Definiertes
 loc A; H * PAZ

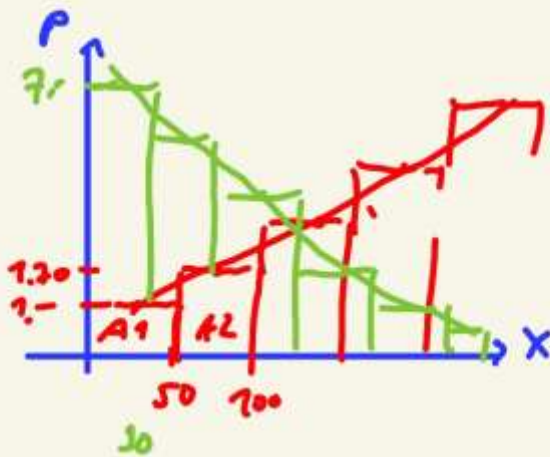
Modell



→ Leon Walras



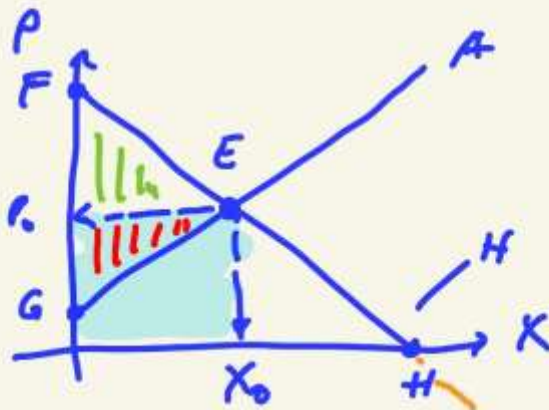
$X_{A;N} = f(P)$
 Menge/Anzahl



Marshall

→ ind. A X

→ ind. N X



E - GGW

$P_0 \cdot X_0 = U$

||| PR

||| KR

$F = X_0 = 0$

Verbotpreis

Prohibitivpreis

G = Preisuntergrenze A

H = Sättigungsmenge

1.-
 Prod.-kosten A

je 1Jk. 3H

Grenz-H

↳ A1 1.-
 ↳ A2 2.-
 ↳ ~~A3 3.-~~
 Grenz-A



~~N1 1.-~~
 N2 2.-
 N3 3.- ↓ ↗

1.-
 Konv.rente

Info -
 Kostengerade
 → Transportkosten
 → $P_0 = 2 \text{ € / Jk.}$

→ Räumliche Handel + Anschluss