

VER zir zLE LE
+ saldo PE - A

Konjunktur \rightarrow PA1: Gesamtinvest
PA2: Unterhoowen

M/A

Зеленый

कुज-पो. ह'क

მოცულობა

Geod $\rightarrow \frac{r_B}{m_G} \rightarrow \frac{1}{16 + \tau - 6r}$

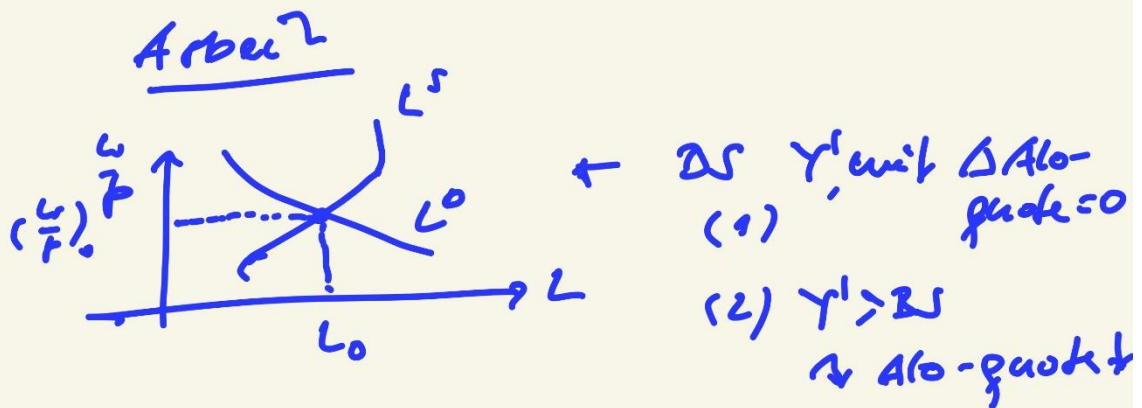
$(5, 2)$ $\frac{C}{H}$ $\frac{r}{D}$

1. Kadiol

$$V_{pi} = \frac{\sum x_{i-1} \cdot P_i}{\sum x_{i-1} \cdot P_{i-1}}$$

↑LZ HR ↑

1,0240
2,4%



$L^* \Leftrightarrow \frac{w}{P} = \frac{\partial Y}{\partial L}$

Annotations:

- $L^* \uparrow \rightarrow P \uparrow (K) \rightarrow \frac{w}{P} \downarrow$ (Lohnminderung)
- $L^* \uparrow \rightarrow P \downarrow (N) \rightarrow \frac{\partial Y}{\partial L} \uparrow$
- $\frac{w}{P} \downarrow \rightarrow L^* \uparrow$
- $\frac{\partial Y}{\partial L} \uparrow \rightarrow L^* \uparrow$
- PA2

$\rightarrow \epsilon_F \uparrow \rightarrow \frac{\partial Y}{\partial L} \uparrow \rightarrow \frac{K}{X} \downarrow \rightarrow \cancel{P \downarrow}$ (PA1)

\downarrow

Einkommen

$X = r \omega L$

\downarrow

$Y \text{ real } \uparrow$


\downarrow

Nachfrage
 nach Gütern

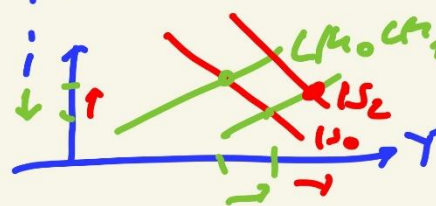
\downarrow

$L \uparrow$

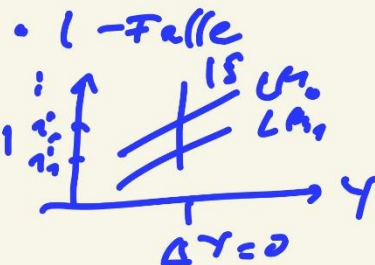
Modelle

- IS-LM  $i \uparrow \rightarrow Y^d \uparrow \rightarrow Y \uparrow$
 $Y \uparrow \rightarrow L \uparrow (M = \text{const.}) \rightarrow i \uparrow$

Politikmix

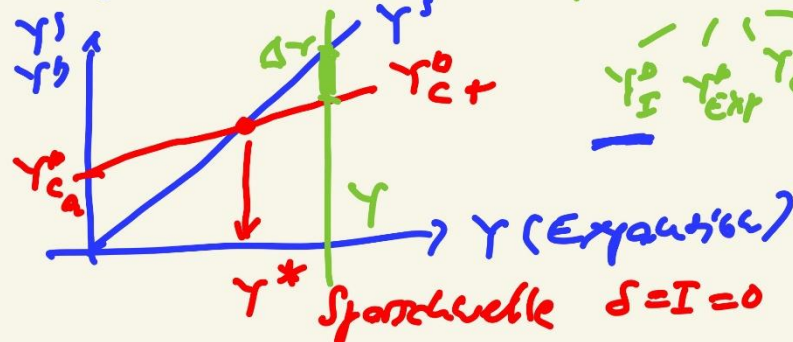


1. LM (kein c.o.)
 \overrightarrow{LM}
 $Y \uparrow i \downarrow$
2. IS
 $i \uparrow Y \uparrow$
 $\uparrow Y \uparrow$ kein c.o.



- 1-fälle
 $GE \rightarrow 0$
 IS constant.
 \rightarrow zu exp. gr \overrightarrow{LM}

k: Güternmarkt



$$Y \rightarrow \Delta Y$$

$$\begin{matrix} Y^d & Y^s \\ \downarrow & \downarrow \\ Y^d_I & Y^s_{C+} \\ \downarrow & \downarrow \\ Y^d_{Exp} & Y^s_C \end{matrix}$$

$$EXL^* - NKX$$


1. $EXL^* \rightarrow$ Exch.-liberals.
2. $E-L^*$ \rightarrow ~~Exporteur.~~
Kapital-L*

3. NKX

data: Taylor - Repl
Lit 2