

+ / -

E-Hypothese

✓

(1) absolute EH

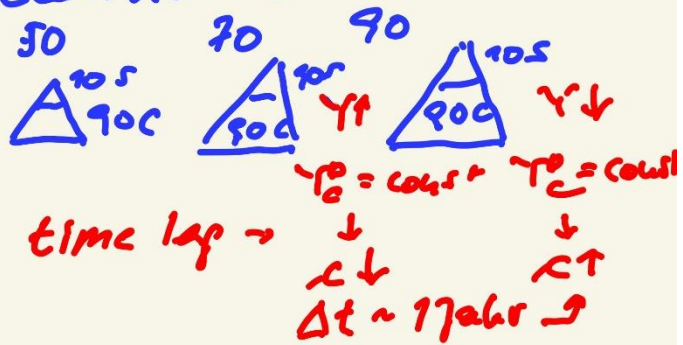
$$\frac{C}{Y} = c \leftarrow \frac{\Delta C}{\Delta Y} = c'$$

$\begin{matrix} 0,9 & & 0,5 \end{matrix}$

$c' < c_{alt} \rightarrow c_{neu} \downarrow$

✓

(2) relative EH

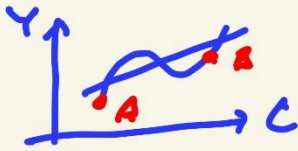


-

(3) permanente EH
 $C_t = f(Y_{t+1} \text{ 'Erwartung'})$

*

Bewertung



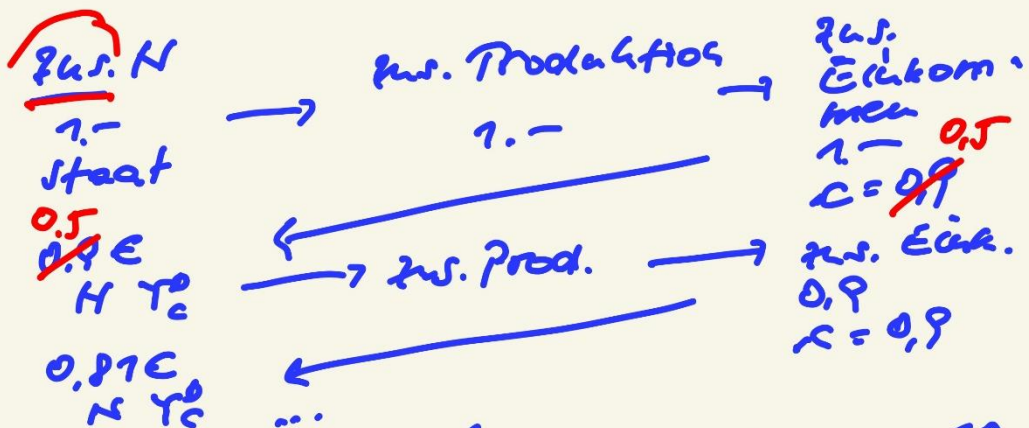
- \bar{AB}
- (1) Trendwandel (✓)
 - (2) Strukturwandel (↑ Allokation) (✓)
 - (3) ↑ Effizienz (✓)
 - (4) Alo (-)

⊖ demerit? temporär? (✓)

NEIN,
 wenn $Y' >$ Produktionsgeschwelle
 (35)
 Okun's Law

3,2% * 7,6%

Nachher: Multiplikator (m_A)



$m_A = \frac{1}{1 - C}$
 $C = 0,9 \quad m_A = 10$
 $C = 0,5 \quad m_A = 2$

$MUC \text{ } 72 \quad m = 7,44$
 $m = 7,07$

