

Determinanten
von λ_i

1. -
Produkte -
rechte λ *

je 1 Stk. 3K

A1: 1.- ↑
A2: 2.-
~~A3: 3.-~~

↪ Grenz-A
marktw A

↪ Transparenz
P = 2 € / Stk

↪ Markträumung

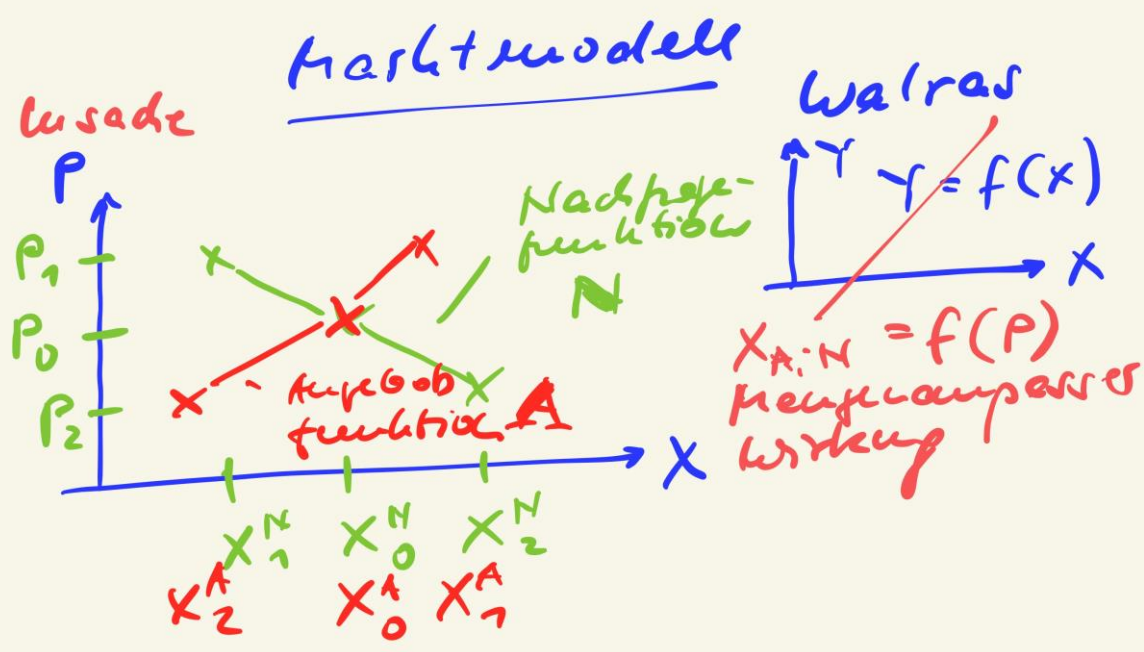
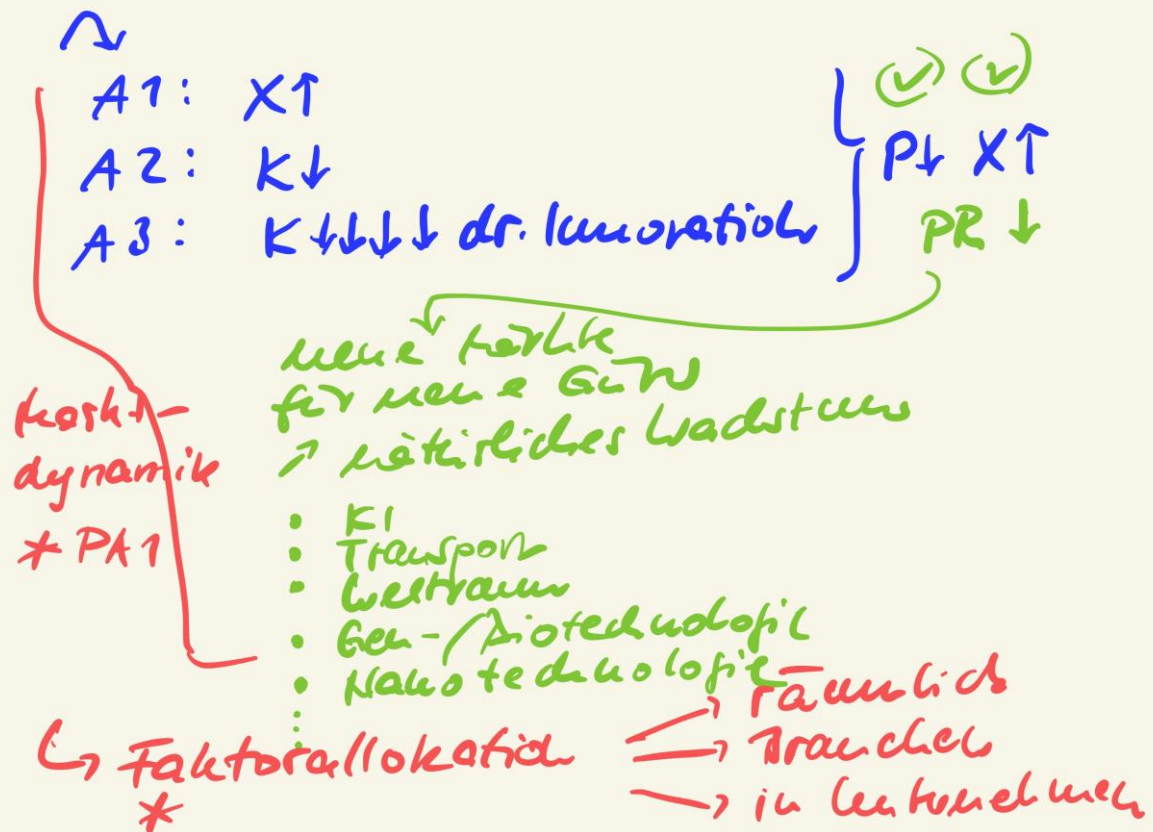
a) Handel zu P_0
A: $PV \leq P_0$
N: $PV \geq P_0$

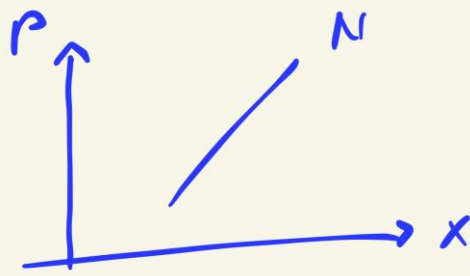
b) Ausschluss
 P_0 wird orientierung

~~N1: 1.- ↓~~
N2: 2.- Grenz-H
marktw
N3: 3.- ↓ H.

↪ Konsumenten-
rechte *

* PA2





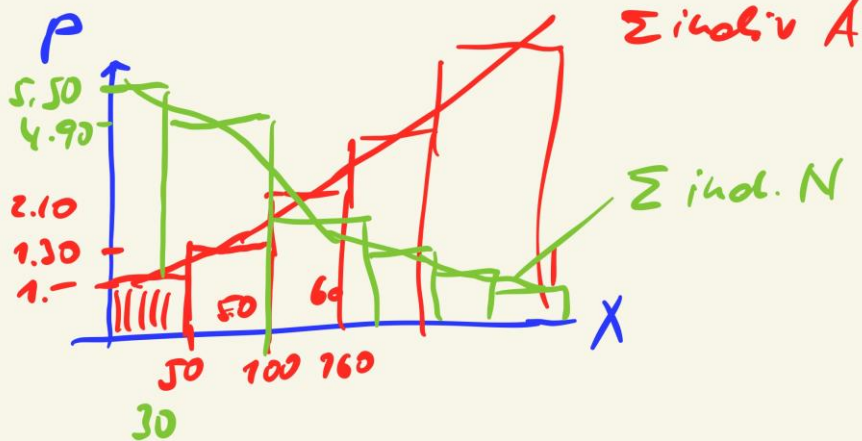
→ Sub-Effekt
Geldumpkonsum

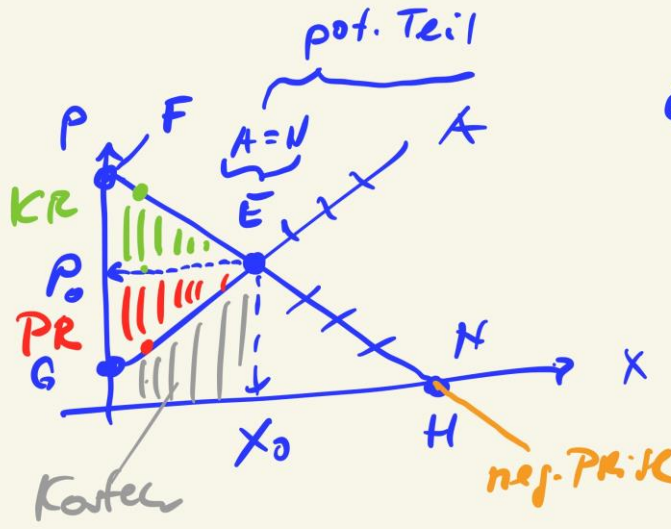
→ USA 20/30 Jahre
Zrot

Fleisch
→ Substitutive G.

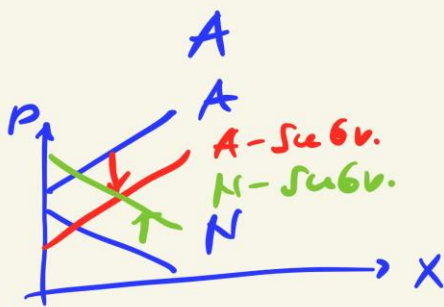
vs.
komplementäre
G.

Marshall



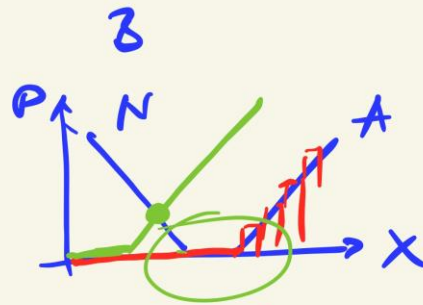


- E - GGW
- $u = P_0 \cdot X_0$
- F - $X_N = 0$
- verbotspreis
- Prohibitivpreis
- H - $P = 0$
- Sättigungsmenge
- G - Preisuntergrenze der A



keine Rechnung,
weil
Ankauf $>$ Prohibitivpreis

NYLON



↑ Liefer frisches Gut