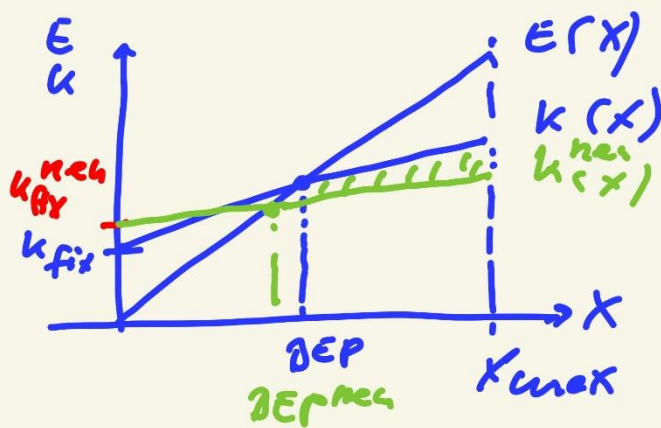


2) Ratio-Partition

\*

$X_{max} = const$

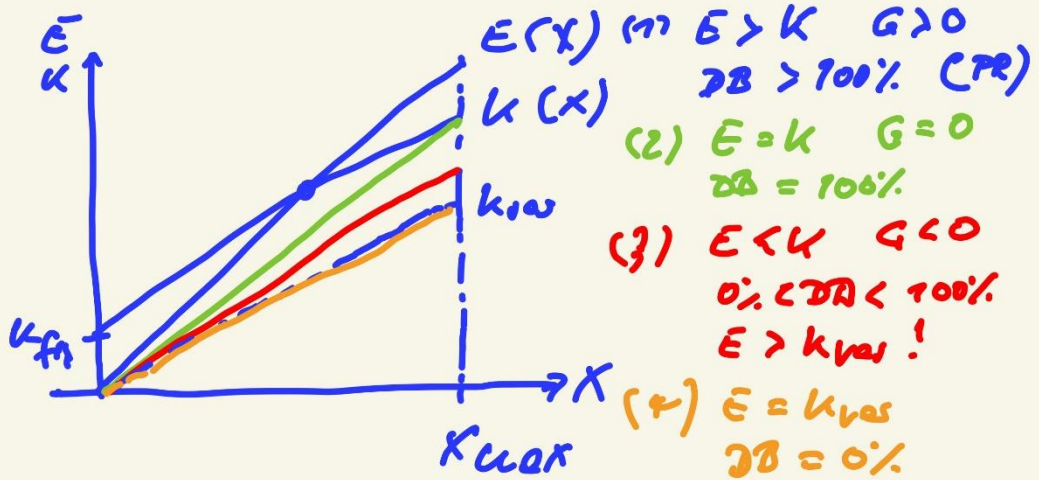


1. Invest.  
 $\uparrow k_{fix}$   
 $\downarrow$   
 2.  $\downarrow k_{var}$   
 Ausstieg  
 $G \uparrow$   $DEP \downarrow$   
 (+) (+)

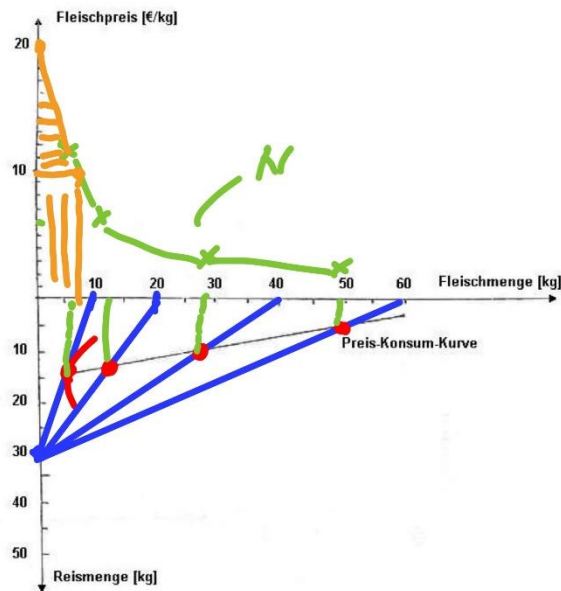
$\uparrow \Delta k_{fix} \mid \downarrow \Delta k_{var}$

3) DB  $\rightarrow$  Deckungsbeitrag

(P $\downarrow$ )



Zusatzaufgabe:  
 Schraffieren Sie bei einem Fleischpreis von 10 €/kg und einem Prohibitivpreis von 20 €/kg die Konsumentenrente waagrecht und die Ausgaben des Haushalts senkrecht.



$K = f(X)$

$O = f(I)$

$X = f(v_i)$

$v_i = f(x)$

$K = f(x; g)$

Upl.  $E = P \cdot X$

$\Delta G = E - K$

Prod: funktionell

v

Faktorverbrauch def. flut.

g

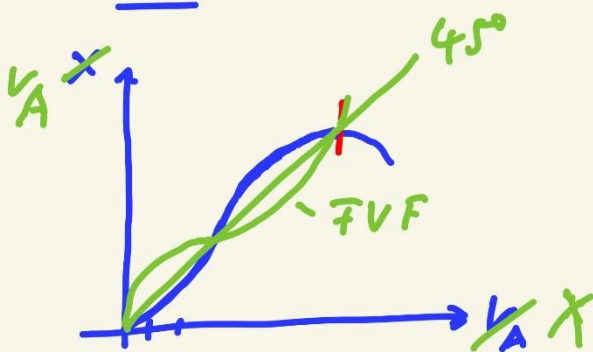
Kontenflut.

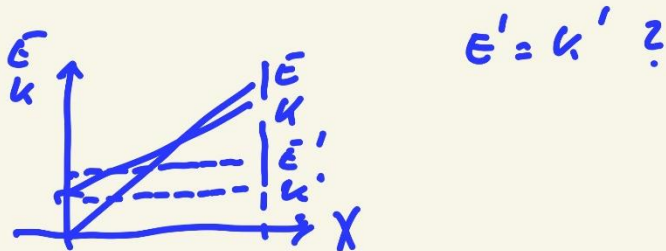
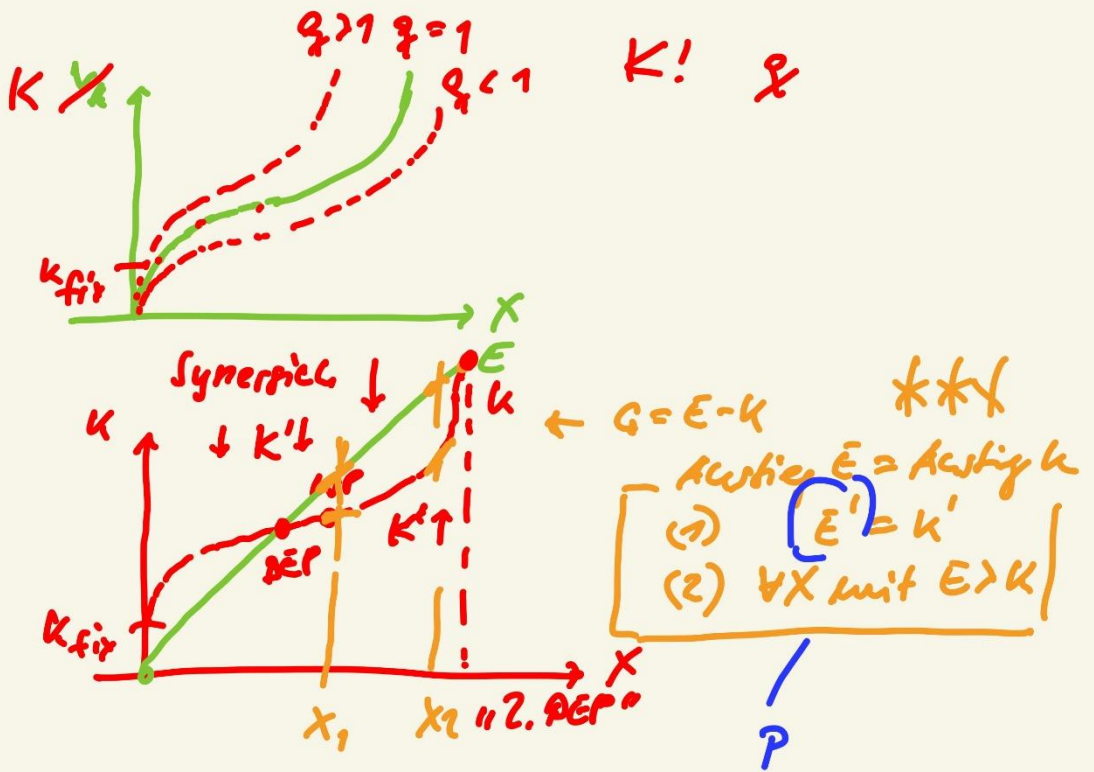
Kosten nach Ertragskette

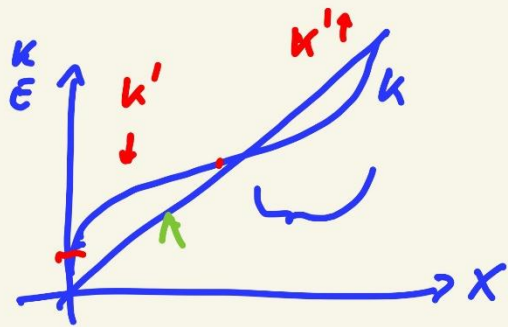
$\overline{K_{de}} + \frac{0}{2} + \frac{0}{2} + \dots$

→ KMG  
(SME)

→ Maltheas

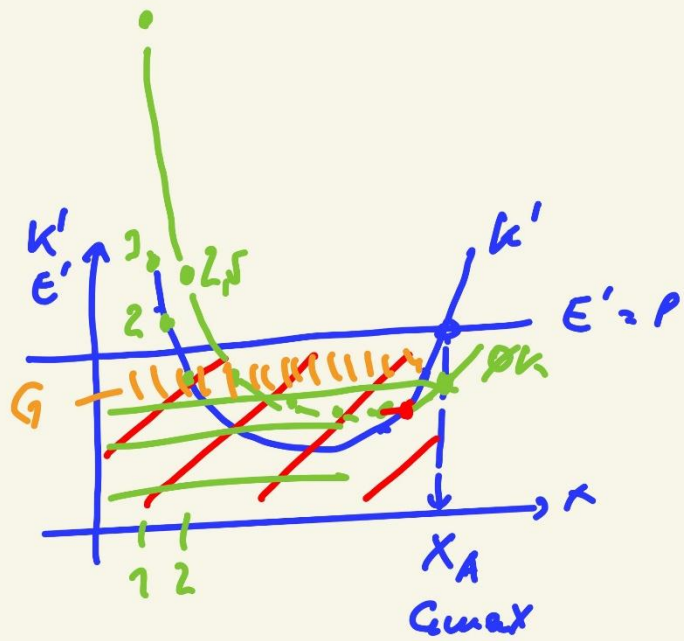
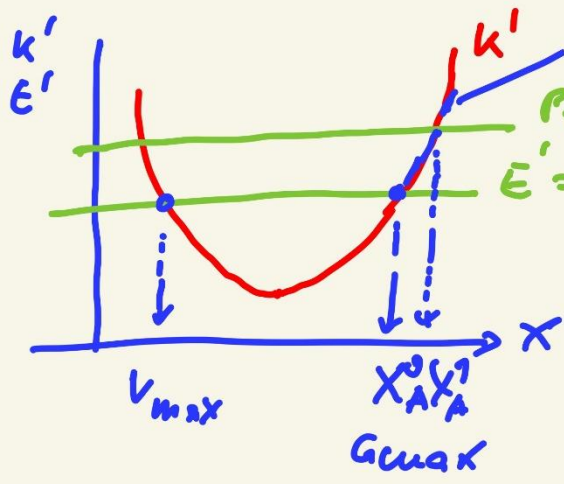






$$k' = E'$$

ind. A-Fkt  
 $P \uparrow$   
 $\downarrow$   $x$



$$G = E - k$$

$$E = P \cdot X \quad \boxed{21}$$

$$k = X \cdot \frac{k}{X} \quad \boxed{22}$$

$$\frac{k}{X} = \frac{k_{fix} + 2k_{var}}{X}$$

