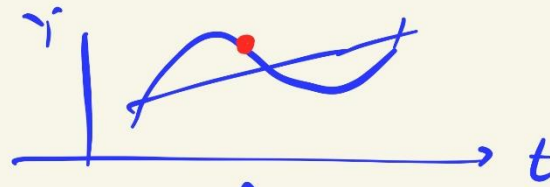


\*  $Y \uparrow \rightarrow Y^D_I \uparrow \rightarrow Y \uparrow \uparrow$ , weil  $Y^D_I$  ist Teilhatter Aktelevator

$\rightarrow$  Zus. Einkommen  
 $\rightarrow Y^D_I \uparrow (x') \rightarrow Y^D_I \uparrow$   
 $\rightarrow Y \uparrow \uparrow \uparrow$

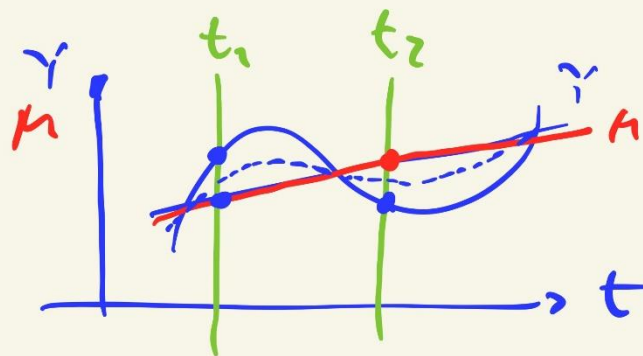
$$m_A = \frac{1}{1-x} = 2$$

~~$$m_{KUC72} = 7,44$$~~



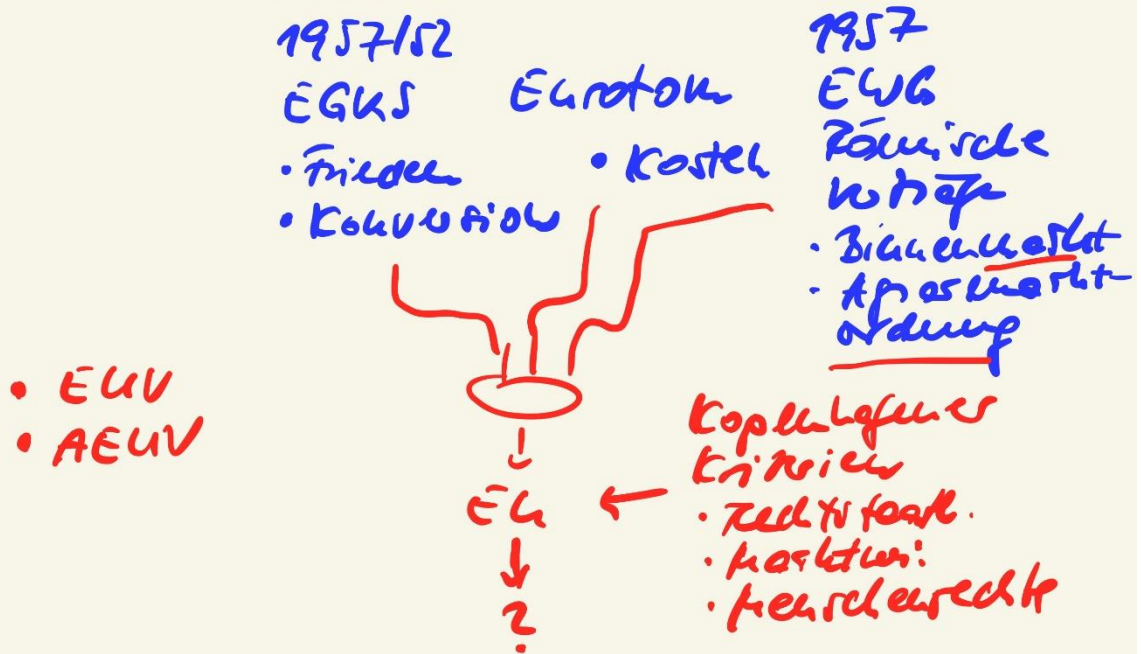
(NB: FED    EZB  
 LZ-    LZ↓    ↘ EUR↓)

Fixierung: Monetarisierung



$L > M$	$L < M$
autark	autark.
$i \uparrow$	$i \downarrow$
$\rightarrow Y' \downarrow$	$\rightarrow Y' \uparrow$

# EU - Supranationale Organisation



## Soz. Ordnung D

### Soziale Marktwirtschaft

