

Indikatoren

Früh	Wt	Spät
<ul style="list-style-type: none"> <li>• Ho-GKI</li> <li>• <math>Y_I^D</math></li> <li>• AE</li> </ul>	<ul style="list-style-type: none"> <li>• <math>Y_I</math></li> <li>• <math>v_{PI}</math></li> <li>• Kap.-auslastung</li> </ul>	<ul style="list-style-type: none"> <li>• <math>A_{Lo}</math></li> <li>• Resch.</li> </ul>

<p style="text-align: center;"><b>K</b></p> <p>Unterkonsum <math>Y</math></p> <ul style="list-style-type: none"> <li>• <math>Y \uparrow \rightarrow Y_I^D \uparrow \rightarrow Y \uparrow \uparrow</math></li> <li>• <math>Y \uparrow \uparrow - Y_I^D \uparrow</math></li> </ul> <p>Ecke.</p> <p><math>Y \uparrow \rightarrow c \downarrow = \frac{c}{Y}</math></p> <p>↳ Nachfrageanstieg</p> <p><math>Y' \downarrow</math></p> <p>↳ <math>Y_G \uparrow</math></p>	<p style="text-align: center;"><b>K</b></p> <p>Überinvestition</p> <ul style="list-style-type: none"> <li>• <math>Y \uparrow \rightarrow Y_I^D \uparrow \rightarrow Y \uparrow \uparrow</math></li> <li>• <math>Y_I^D \uparrow \uparrow</math></li> </ul> <p><math>\approx \frac{P_I \uparrow \wedge (Z) \downarrow}{K_I \uparrow}</math> <span style="color: green;">keynes</span></p> <p><math>K_I &lt; G_E \rightarrow Y_I^D \uparrow</math></p> <p><math>K_I = G_E \rightarrow Y_I^D \uparrow</math></p> <p><u><math>K_I &gt; G_E \rightarrow \text{Ende } Y_I^D</math></u></p> <p><math>z \downarrow \approx Y \uparrow \uparrow</math></p> <p style="color: green;">Fehlallokation Marxbildung</p>
---	--

+/-  
 unkonstant  
 +

### 3 Einkommenshypothesen

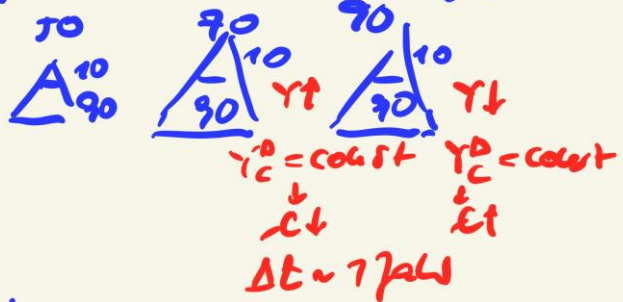
① Keynes: absolute EH

$$\frac{Y^D_C}{Y} = c \leftarrow \frac{\Delta Y^D_C}{\Delta Y} = c'$$

0,9                      0,5

② relative EH    c - rel. konstant

+



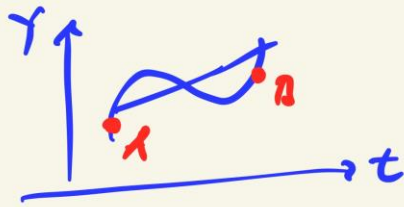
③ →

-

permanent EH

$$C_t = f(Y_{t+1}^e)$$

Bewertung



\* PAC

① Strukturwandel  
(F-Allokation)

② Treiblaststeuer

③ Effizienz ↑

④ NO

- temperatur? / Jt

dauerhaft?  
NEIN, wenn

$Y' >$  Beschäftigungsdelle  
(BS) \*

BS →  $Y'$  mit  $\Delta A_{lo-grok} = 0$   
3,2% → 1,8%

## Weltwirtschaftskrise 1929

- Kapitalmarkt - UnGGU ✓
- Geldmarkt - UnGGU ✓
- Gütermarkt - UnGGU ✓
- Arbeitsmarkt - UnGGU !

Keynes :  $\downarrow X \rightarrow$  UnGGU  
 $\uparrow$  Staat  
Ziel:  $Alo \downarrow$