

Gesamtwirt. GGW

Faktormärkte

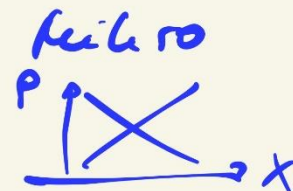
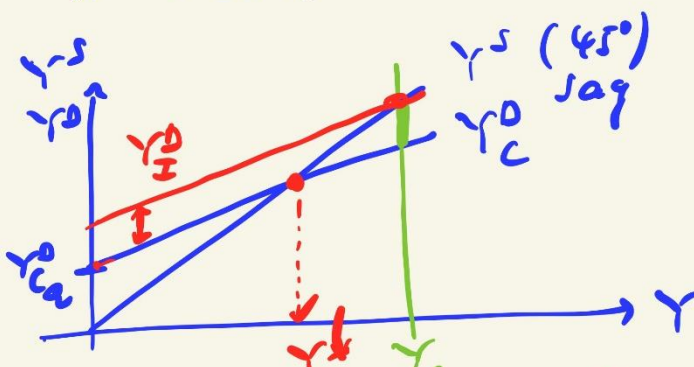
✓ Güter- m. $r^s = r^d$	✓ Geld- m. $M = L$	Geld- kap. m. $A = N$	Sach- kap. m. $A = N$	Arbeits- markt $A = N$	Arbeits- m. $L^s = L^d$
----------------------------------	-----------------------------	--------------------------------	--------------------------------	------------------------------	-------------------------------

Unvollständig.

- interdependent
- simultanes GGW? ?

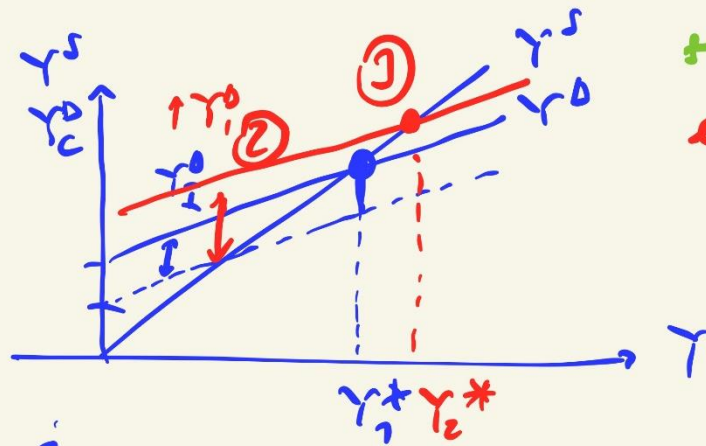
Hicks

1. Gütermarkt

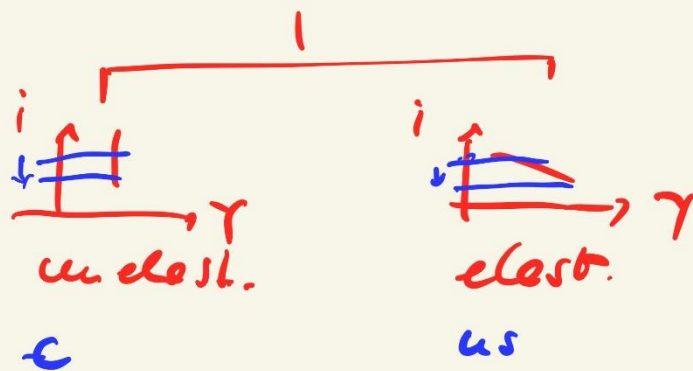
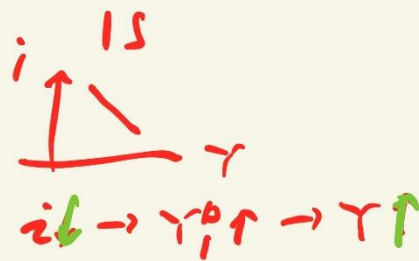
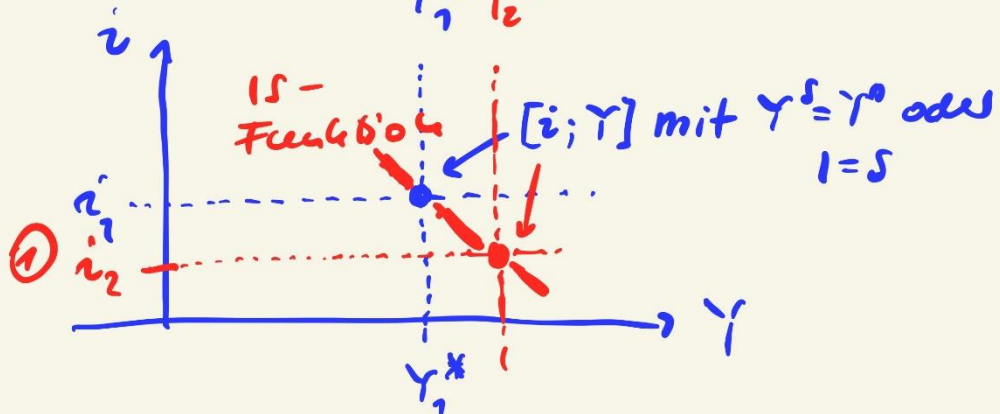


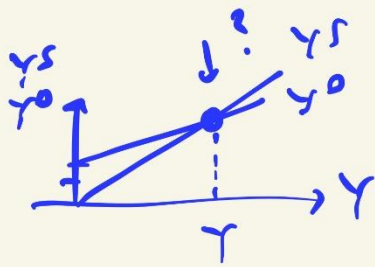
$Y^s > Y^d$
 $(\Delta Y) = Y^d - Y^s$
 $Y^d = Y^d_C + Y^d_{EXP}$
 $Y^d_C \uparrow ?$

sparschwellen *
 $Y^d_C = Y^d_{C_0} + cY$
 Y mit $S = 0 = I$
 $r^s = r^d_C$



$i \downarrow$
 exogene
 Schock
 $i \downarrow$





$$Y^S = Y^D = Y^* ?$$

$$BIP = C + I + G + EXP - IMP$$

$$Y = Y_C^D + Y_I^D + Y_G^D + Y_{EXP}^D - Y_{IMP}^D$$

$$Y_C^D = Y_{C_0}^D + c \cdot Y$$

$$t = 0,4$$

$$(1-t)$$

$$= Y_{C_0}^D + c(1-t)Y$$

Brutto-
I.

$$Y = Y_{C_0}^D + c(1-t)Y + Y_G^D + Y_{EXP}^D - Y_{IMP}^D + Y_I^D$$

① - ④ *

①

$$1Y = 100 + 0,9(1-0,4)Y + 500 + 200 + 300 - 0,04Y$$

$$1Y = 100 + 0,54Y + 500 + 200 + 300 - 0,04Y$$

$$0,5Y = 1100 + 0,5Y$$

$$Y = 2200$$

Y* mit l=5

②

t ↓ → Y* ?

t ↑ → Y* ?

• $Y_{C_0}^D \uparrow \rightarrow Y \uparrow$

• aber $T \downarrow \rightarrow Y_G^D \rightarrow Y \downarrow$

• aber Kredite → $Y_G^D \uparrow$

• $Y_{C_0}^D \downarrow \rightarrow Y \downarrow$

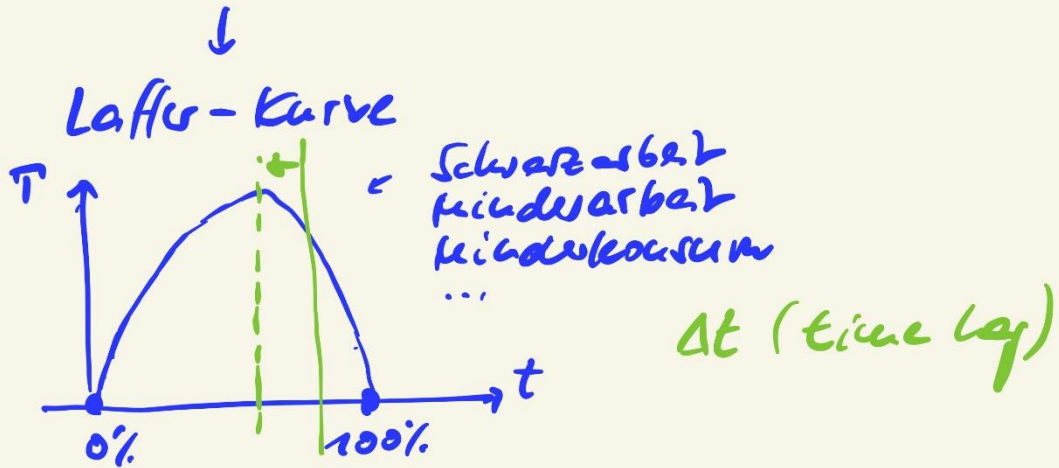
aber: $T \uparrow \rightarrow Y_{C_0}^D \uparrow$

aber!
 $Y_I^D \uparrow$

→ Multiplikator

→ $Y \uparrow$ + Multiplikator

• Selbstfinanzierung!



③ Investitionsrechnung

$$I_{\text{brutto}} = I_{\text{Einkauf}} + I_{\text{netto}}$$

↑
Kreditz.

200 50 150

$I_{\text{netto}} > 0$	$\ddot{\text{}}$ 50 alle Abschl. → Einkauf	$\ddot{\text{}}$ 150 Kap.-stock ↑
$I_{\text{netto}} = 0$	$\ddot{\text{}}$ alle Abschl. → Einkauf	$\ddot{\text{}}$
$I_{\text{netto}} < 0$	$\ddot{\text{}}$ Abschl. → kein best. Einkauf	$\ddot{\text{}}$

④

$$\begin{aligned}
 AB &= \text{EXP} - \text{IMP} \\
 &= 300 - 0,07 \cdot Y \\
 &= 212 //
 \end{aligned}$$

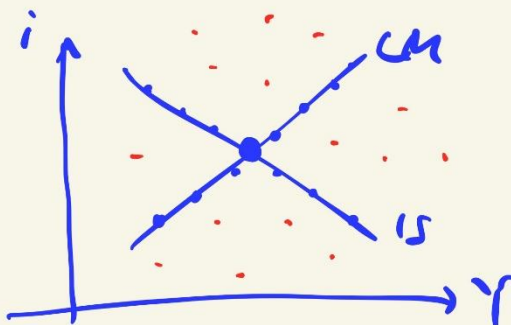
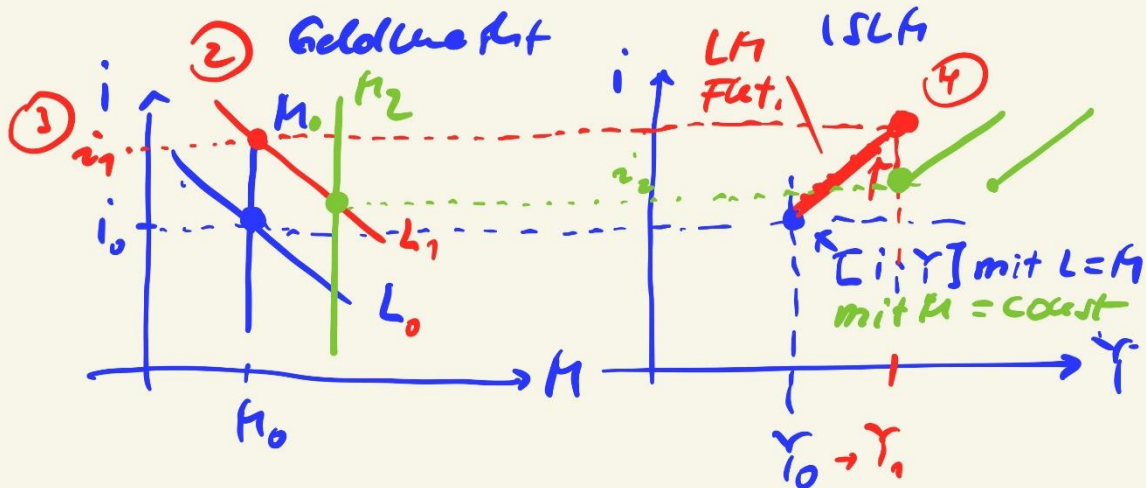
Geldmarkt

Geldangebot
 $M_1; M_2$

- Proportionaler
 (+ multiple Geldschöpfung)
 Filialelastisch

Geldnachfrage:
 L

- Defizitmotiven
- Transaktionsmotiv 75%
- Spekulationsmotiv
- Vorsichtsmotiv



④ exogener Schock
 $Y \uparrow$