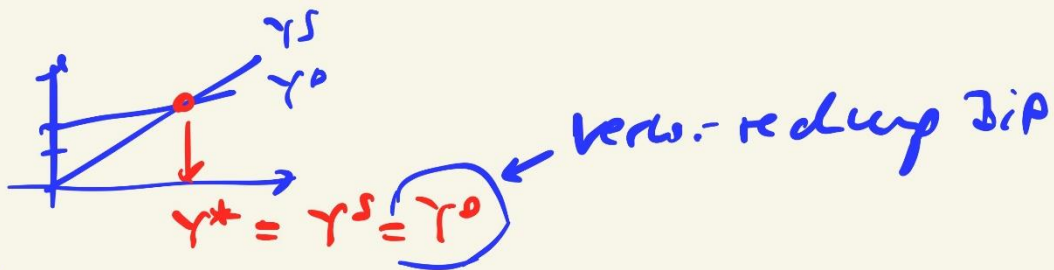
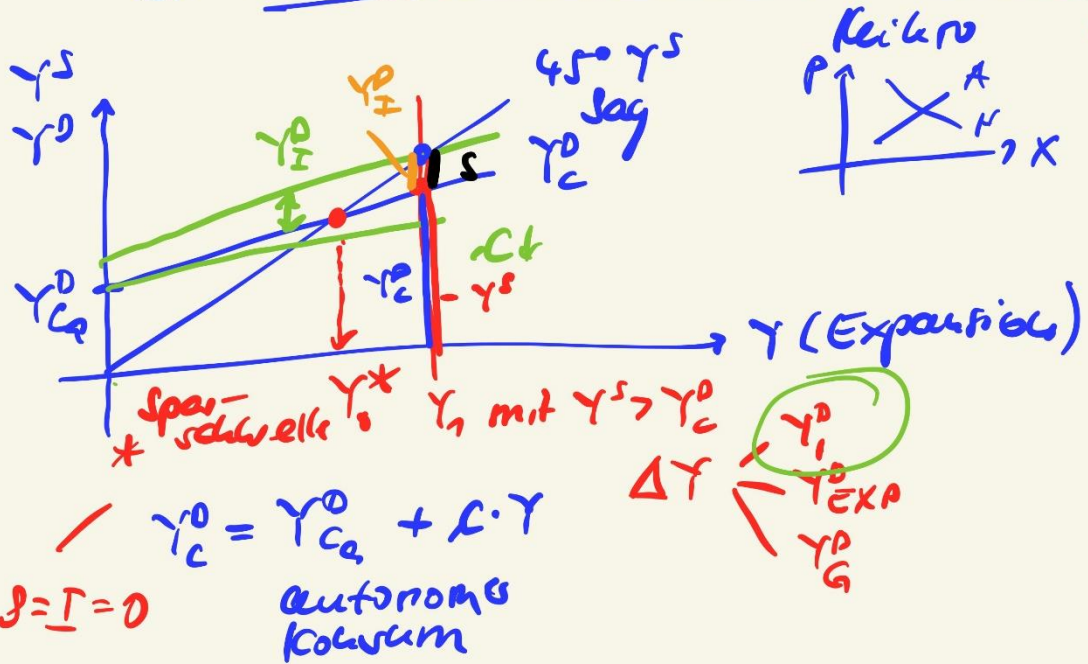


① Kreislaufmodell. Gütermarkt



①

$$Y^D = Y_c^D + Y_I^D + Y_G^D + Y_{EXP}^D - Y_{IMP}^D$$

$$Y_c^D = Y_c^D + c \cdot Y \quad t = \frac{T}{Y}$$

$$Y_c^D = Y_c^D + c(1-t)Y$$

$$1Y^D = Y_c^D + c(1-t)Y + Y_I^D + Y_G^D + Y_{EXP}^D - Y_{IMP}^D$$

$$\begin{aligned} &= 100 + 0,9(1-0,4)Y + 200 + 500 + 300 - 0,04Y \\ &= 1100 + 0,544Y - 0,04Y \end{aligned}$$

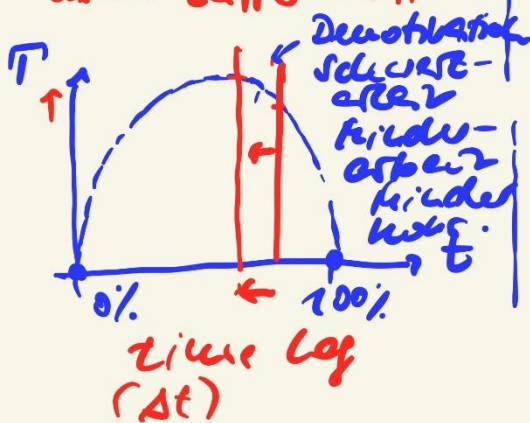
$$0,5Y = 1100 + 0,5Y \quad Y = 2200 \quad \leftarrow Y^* \text{ mit } I=S$$

②  $t \downarrow \rightarrow Y^* \uparrow$

$\rightarrow Y^D \uparrow \rightarrow Y^* \uparrow$

aber:  $T \downarrow \rightarrow Y^D \downarrow$   
 $\rightarrow Y^* \downarrow$

aber:  $Y^D$  dr. Kredite  
oder: Laffer-Effekt



$t \uparrow \rightarrow Y^* \uparrow$

$\rightarrow Y^D \downarrow \rightarrow Y^* \downarrow$

aber:  $T \uparrow \rightarrow Y^D \uparrow$

$\rightarrow Y^D \downarrow = Y^D \uparrow$

$\rightarrow$  Akkumulator / Multiplikator

$\rightarrow Y^* \uparrow$

③

$$I_{\text{brutto}} = I_{\text{Eban}} + I_{\text{netto}} + \Delta V$$

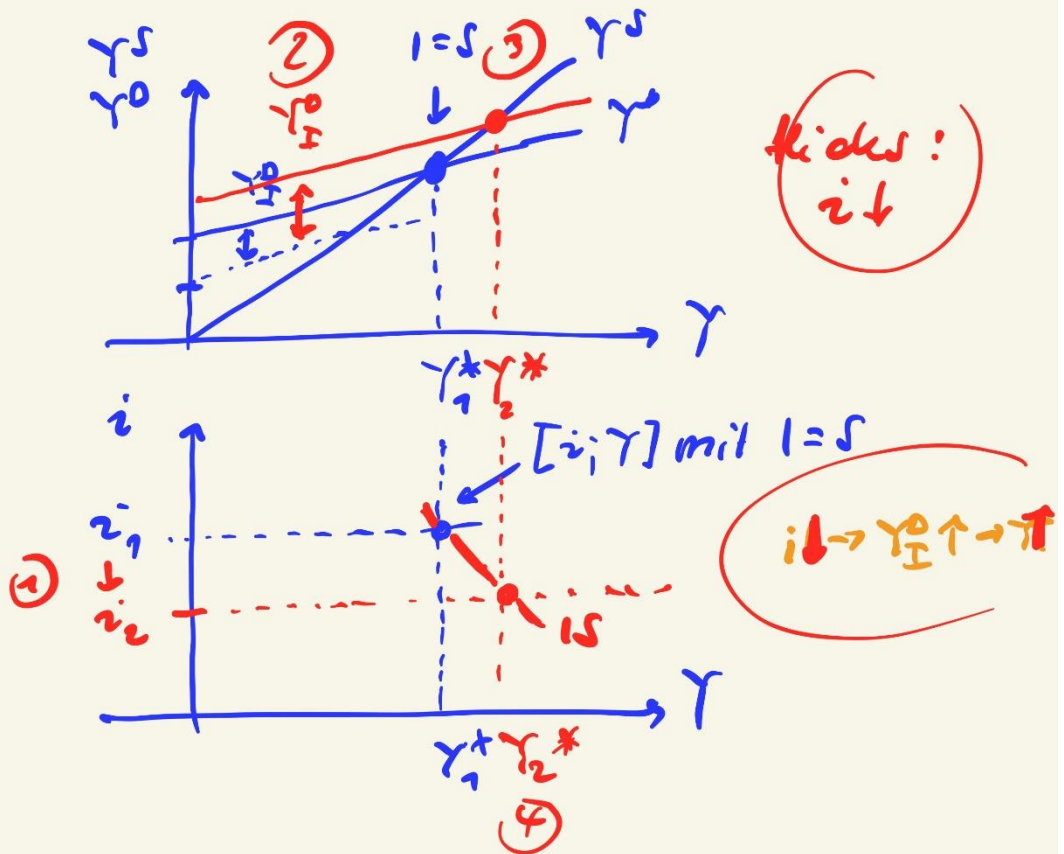
200	50	150	ü ü
150	150	0	ü
100	750	-50	ü

Lege von Substanz

④

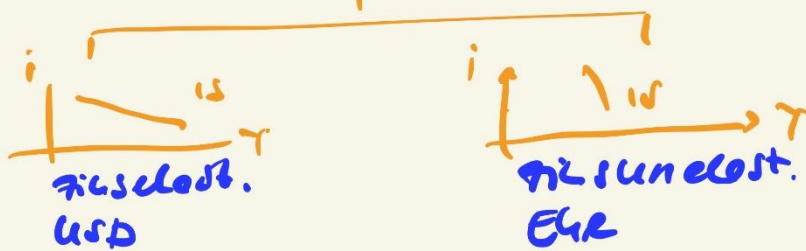
$NKX = \Delta B$   
 $\Delta B = EXU = EXP - IMP$

$EXU = 300 - 0,04 \cdot 2200$   
 $= 300 - 88$   
 $= 212$



$$i \downarrow \rightarrow Y \uparrow \rightarrow T \uparrow$$

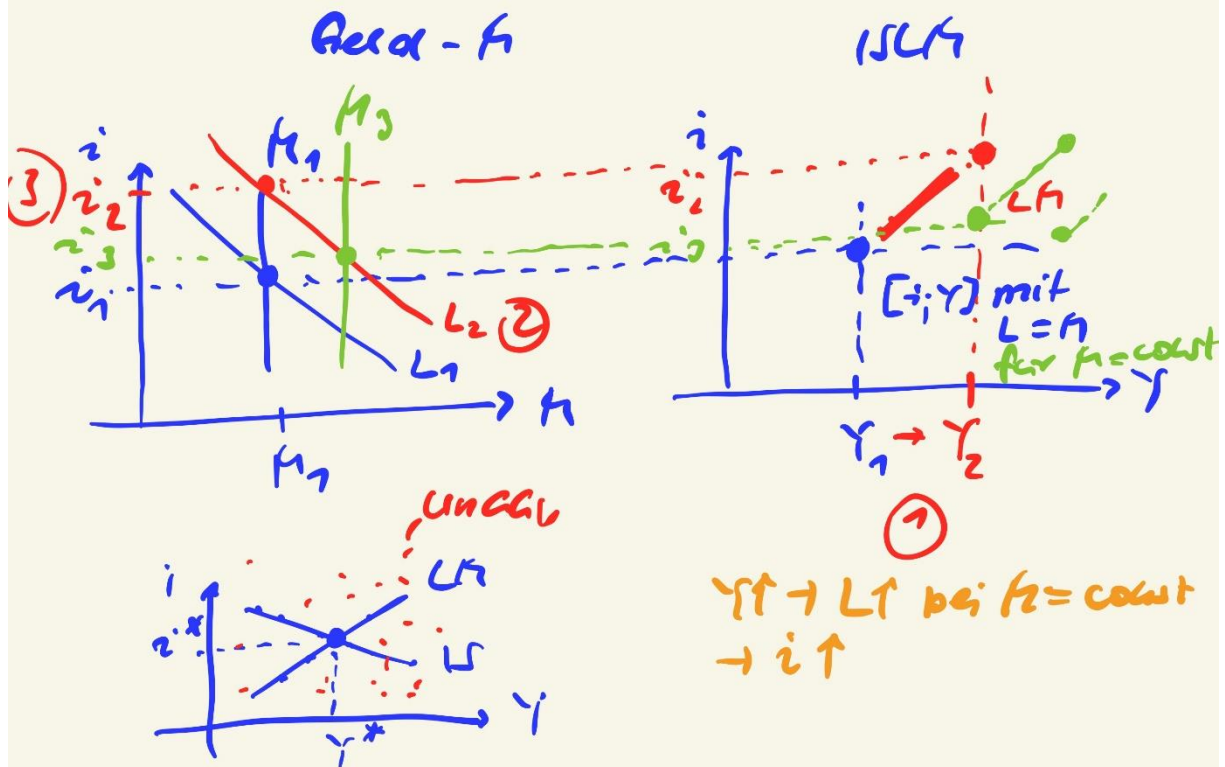
$$\uparrow \text{ IS } \rightarrow T$$



# Realwirtschaft. Geldmarkt

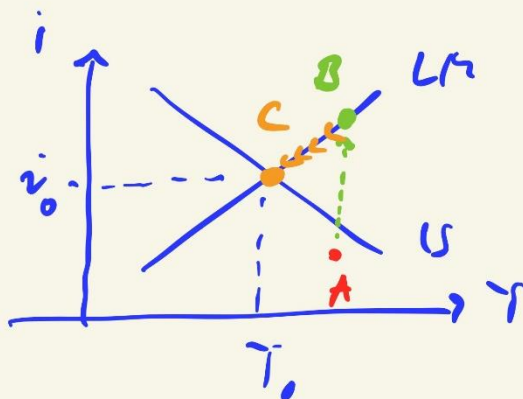
Geldangebot  $M; M^s$  • konventionelles  
 + Plusleistung.

Geldnachfrage  $L$  • Transaktionsbedarf  
 • barichtbedarf  
 • spekulatives Motiv  
 • Reallostmotiv



Aufwendig 7:

Prognose



1. Zustand A  
 IS  $i$  zu gering  
 LM  $i$  zu gering

2. Anpassung  
 LM schmale  
 $L > M \rightarrow i \uparrow$   
 $\rightarrow B$   
 IS  $i$  zu hoch  
 $\rightarrow Y_0 \downarrow \rightarrow Y \downarrow$   
 mit  $i \downarrow$   
 $\rightarrow C$

3. Empfehlung