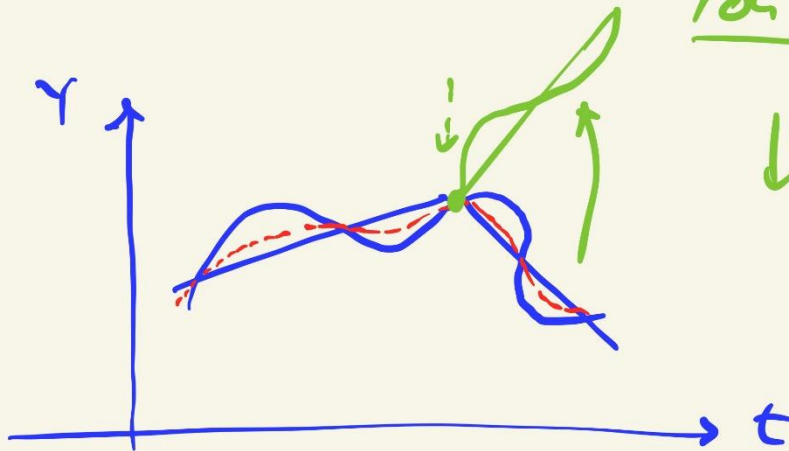
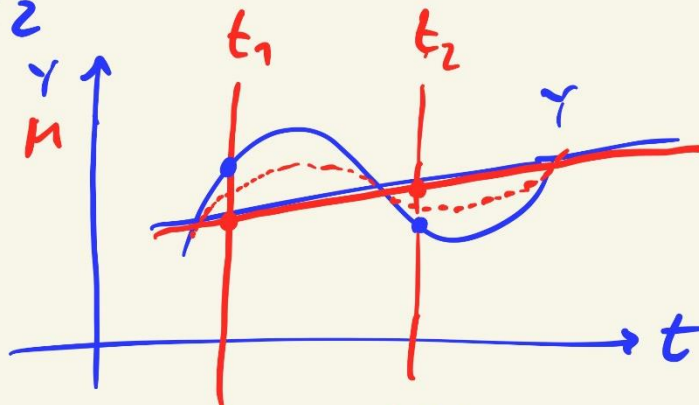


Wachstums- / prozessorientierte Politik



- A-orientiert
- "jedes A → N" (Say)
  - ↳ verkauf Einkommen
  - ↳ Kauf Invest. = sparen
- $S > I \rightarrow z \downarrow$   
 $S < I \rightarrow z \uparrow$
- $\Delta$  Depressions + Eigenverantwortung
- Staat  
→ Ordnungspolitik
- Konkretismus  
↳ Friedmal

\* PAZ



$h < L$        $h > L$   
 $\curvearrowright$        $\curvearrowright$   
 autouet.  $\uparrow$     autouet.  $\downarrow$   
 $\curvearrowright$   $Y' \downarrow$      $\curvearrowright$   $Y' \uparrow$   
 autouet. Stabilisator  $\curvearrowright$

Fish v - Gleichung

$$M \cdot u = Y \cdot P \quad h = \frac{Y \cdot P}{u}$$

$(\pi)$ 
 $(h)$

$h' - 1\%$        $+2,5\% + 1\%$   
 $+1\%$   $\swarrow$   
 $+2,5\%$   $\swarrow$   
 $+1\%$   $\swarrow$   

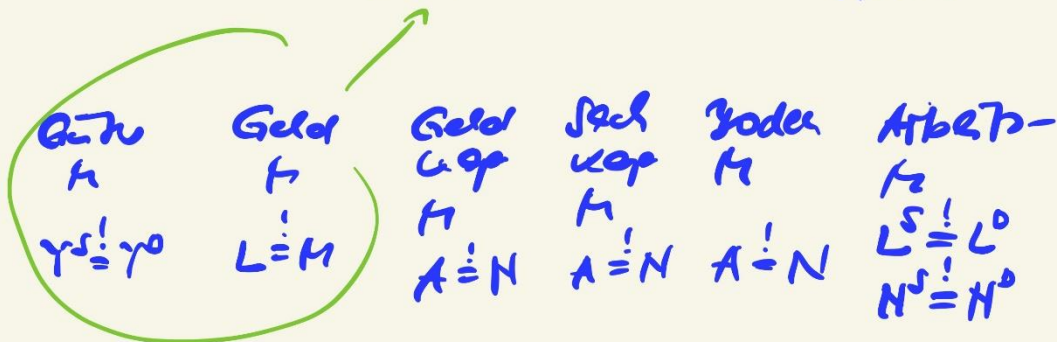

---

 $4,5\%$

	K	N
Ziele	Allo ↓ UNGGW	GGW
LX	N-orientiert antizyklisch	A-orientiert
Ausgabe	GDSZ	Wachstumsbedarf
Einführt	Zeit / Umfang	Dezulpolitik
Voraussetz.	bestimmungen	Eigenverantwortl.
Finanz:	<ul style="list-style-type: none"> <li>• KAP</li> <li>• Kredite</li> </ul>	-
Zitieren	<ul style="list-style-type: none"> <li>• Schulden</li> <li>• Fehlallokation</li> <li>• Strukturpolitik</li> <li>• crowding out</li> </ul>	<ul style="list-style-type: none"> <li>• keine soziale Komponente</li> </ul>
Externe:		monetarismus

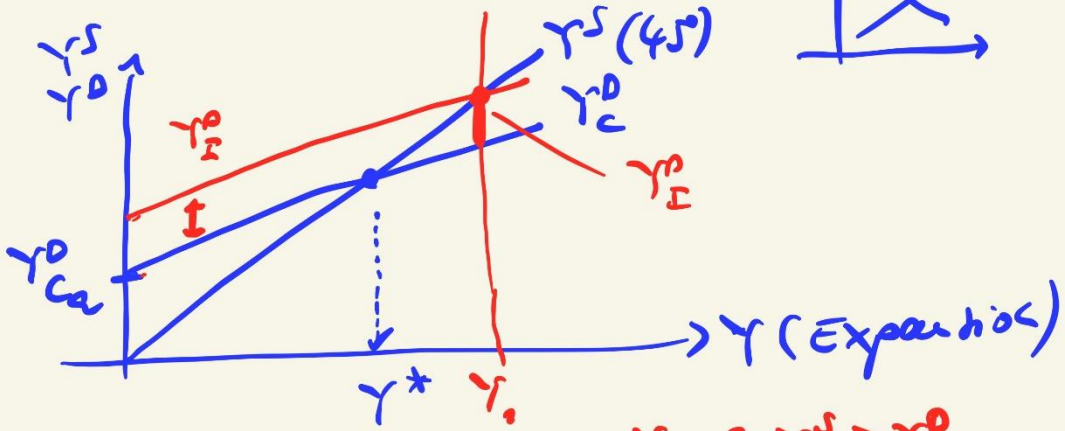
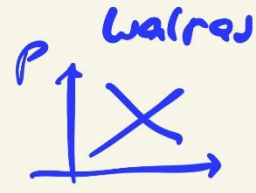
ISLMZZ +

Hicks



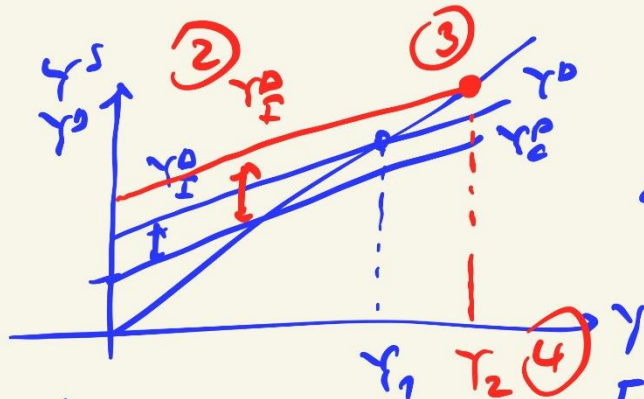
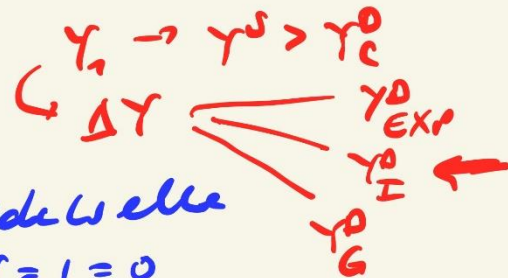
simultanes  
GGW  
interdependente  
M.

makroök. Güter-M

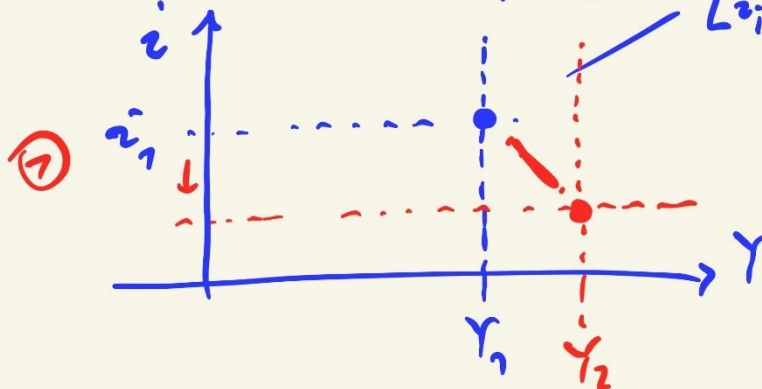


$$Y^D_C = Y^D_G + c \cdot Y$$

\*  $Y^* \rightarrow Y^S = Y^D_C$  Spardeckelwelle  
 $s = 1 = 0$



$i \rightarrow Y^D_I$   
 $i \downarrow$



$[i; Y]$  mit  $l = S$

→ Wi. ohne Wachstum  
→ Defizit