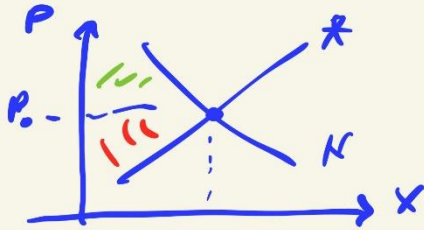


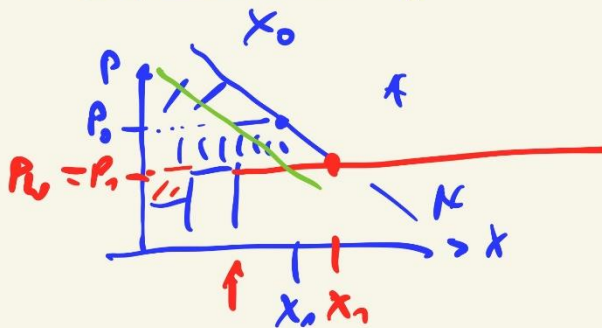
Zölle → Einfuhrzölle

↳ vgl. L&S

WTO $\begin{cases} \text{GATT} \\ \text{GATS} \\ \text{TRIPS} \end{cases}$



Autarkie



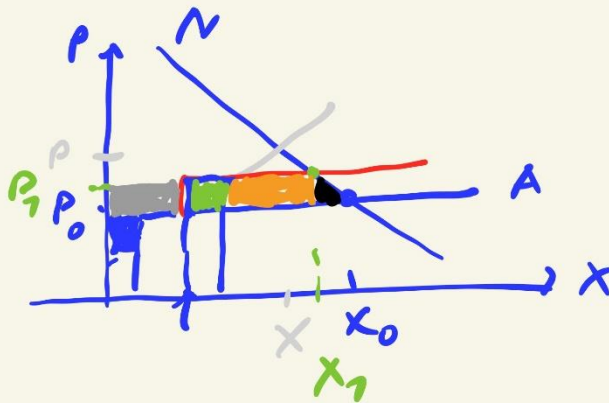
Öffnung

$P \downarrow$ $X \uparrow$

KRT \uparrow PR \downarrow

weniger Kosten

\rightarrow AIO \rightarrow $\gamma \downarrow$



Zoll

\square allg PR

\square KR \uparrow PR

\square KR \uparrow Kosten

\square KR \uparrow Zölle

\blacktriangle KR-Verlust

* PA 3

$$\begin{array}{r} 1 \quad \cancel{21} \rightarrow \\ \cancel{61} - \\ \cancel{4} \\ \cancel{21} \end{array}$$

$$\cancel{70} \quad \cancel{2} - d$$

$$1,0790$$

$$1,9\%$$

$$\cancel{1,072}$$

$$r^* = 5000 \text{ Net.€}$$

$$l = 5$$